

Homeless population being equal partners in the development process

Abstract

ICOM has partnered with those who are most affected by the homelessness issues in Florianópolis/Brazil – the homeless population themselves. The purpose is that research findings both come from and go directly back to the people who need them most and can make the best use of them. The research is part of a broader 'burning issue project' that ICOM has initiated in partnership with the Global Fund for Community Foundations.

The main goal is to:

- (i) Strengthen the Movement of the Homeless Population (MPR/SC) in the Greater Florianópolis, increasing participation of homeless people as leaders to provide social control over the implementation of public policies.
- (ii) Facilitate the relationship between the movement's leaders and public officials, stimulating cooperation to plan and implement public policies and to generate positive change from bottom to top.



Background

ICOM serves the region of Greater Florianópolis, which counts on around 1 million inhabitants. Although presenting a high HDI, the region faces challenges related to social justice, affecting particularly the homeless population. In order to guarantee a needed and proper participation of homeless people in the discussions about policies towards their rights and wellbeing, the participatory research aims to strengthen the capacities of MPR/SC (homeless population movement) in Greater Florianópolis.

940.000
inhabitants

Total population
(IBGE, 2016)

21

NGOs that promote human rights

04

NGOs that support current research

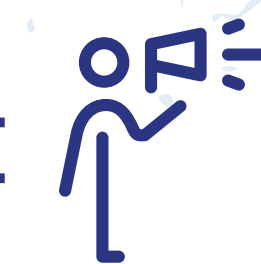
10

Grant holders for research

Why a Participatory Research?



VOICE



Gives voice to the homeless in building research tools. Homeless representatives actively participate in selecting CBOs, building survey questions and sharing results.

Promotes the strengthening of movements and local CBOs - community based organizations.



CAPACITY BUILDING

AUTONOMY AND LEADERSHIP



Creates autonomy and fosters leadership in project beneficiaries (homeless people themselves), allowing them to be the researchers of the study.

Method



Build Trust



Gather people together



Invite other CBOs to join and give them financial support. CBOs must be trusted among homeless population <they decide>



Hold capacity building meetings



Co-develop research questions



Test research questionnaire



Group select homeless people as researchers



Give researchers financial support



Apply learnings from testing period



Launch community-based research

Expected Results

- Enhance initiatives towards the homeless community through technical and financial support;
- Strengthen and monitor the public policies of attention to this target group;
- Contribute to the reduction of stigmatized visions of the society about the homeless community;
- Reinforce ICOM's role as a plural community and territorial based organization that works towards the defense of human rights in Greater Florianópolis.

